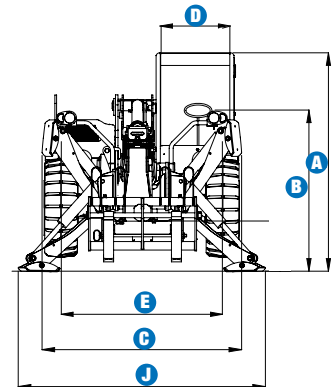
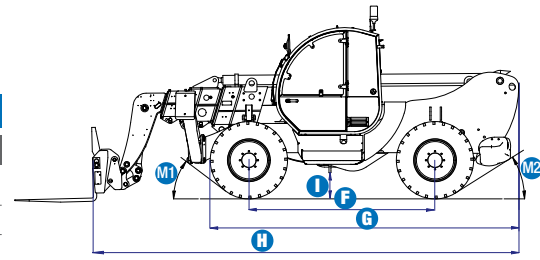


Specifications

MODEL		GTH™-4514 EX	
MEASUREMENTS	Metric	Imperial	
Lifting height maximum	13.71 m	45 ft	
Lifting capacity maximum	4,500 kg	9,920 lbs	
Lift capacity at maximum height	3,500 kg	7,715 lbs	
Lift capacity at maximum reach	1,250 kg	2,755 lbs	
Forward reach maximum	9.61 m	31 ft 6 in	
Reach at maximum height	56 cm	1 ft 10 in	
A Height	2.56 m	8 ft 5 in	
B Height at steering wheel	1.60 m	5 ft 3 in	
C Width	2.45 m	8 ft	
D Inside cab width	78 cm	2 ft 7 in	
E Track	1.98 m	6 ft 6 in	
F Wheelbase	2.85 m	9 ft 4 in	
G Length at front wheels	4.65 m	15 ft 3 in	
H Length at fork-holder plate	6.10 m	20 ft	
I Ground clearance	37 cm	1 ft 2 in	
L Overall width, stabilisers extended	2.95 m	9 ft 8 in	
M1 Obstruction angle	33°	33°	
M2 Departure angle	29°	29°	



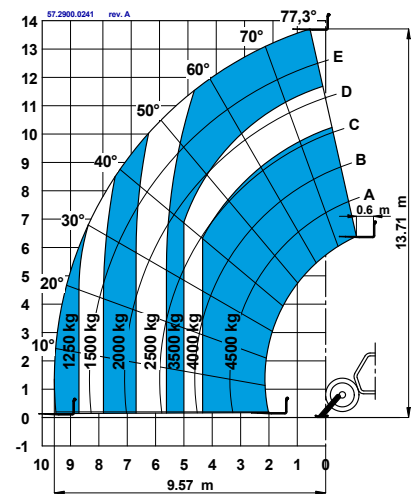
PRODUCTIVITY	
Inside/outside turning radius	2.15 m/4.5 m 7 ft/14 ft 9 in
Break out force (with 500L shovel SAE J 732/80)	7,900 kg 17,415 lbs
Towing capacity at dynamometer	8,200 kg 18,076 lbs
Travel speed maximum	35 km/h 22 mph
Fork-holder plate rotation	145° 145°
Chassis levelling on the front axle	+/- 8° +/- 8°
Floating forks	L 1200 mm L 3 ft 11 in Section 120 x 50 mm Section 5 in x 2 in
Tyres (DIN 70361)	405/70-20" PR14 8 holes wheel disc
Lifting/lowering speed	TBC TBC
Extension/retraction speed	TBC TBC

POWER	
Engine	Perkins 1104 D-44T 4-cylinder Turbo Diesel 74.5 kW (101 HP), Tier3
Tank capacities	
Fuel	135 L 30 gal
Engine oil	7 L 1.5 gal
Hydraulic oil	150 L 48 gal
Hydraulic output/pressure	95 L/min-270 bar 30 gal/min-3,916 psi

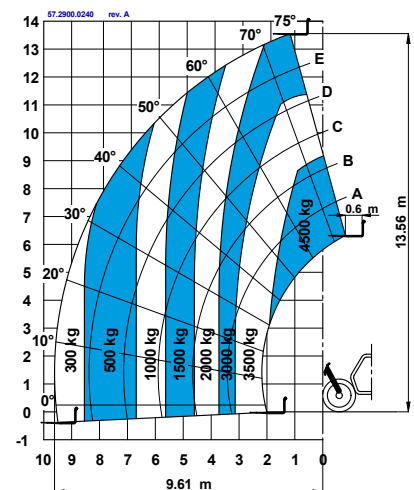
WEIGHT	
Weight*	10,600 kg 23,367 lbs

STANDARDS COMPLIANCE	Operating cab conforms to ISO3471 (ROPS) and ISO3449 (FOPS) Low emission engine conforms to UE 97/68 directives. GOST R 50950-96
----------------------	--

* Weight will vary depending on options and/or country standards



Lift capacity chart (with stabilisers)



Lift capacity chart (without stabilisers)
EN1459, Annex B

Features

STANDARD FEATURES

MEASUREMENTS

- 4,500 kg (9,920 lb) maximum lift capacity
- 13.71 m (45 ft) maximum lift height
- 9.61 m (31 ft 6 in) maximum forward reach

PRODUCTIVITY

- 4 x 4
- 4 - wheel steer
- 3 steering modes:
 - front wheel steer
 - crab steer
 - coordinated steer
- Power assisted steering
- Front stabilisers
- Hydrostatic transmission with variable displacement pump and motor electronically controlled
- Two-speed mechanical gearbox
- Multifunction electro-proportional joystick 4x1
- Limited slip differential on front axle
- Chassis levelling on front axle +/- 8°
- Floating forks
- Attachments holder plate with hydraulic quick coupling
- Door with two sections: steel on bottom, glass on top. Both sections open separately
- Boom length and boom angle indicators correspond to the load charts
- Adjustable suspended seat
- Large diameter steering wheel
- Front & rear windscreen wipers
- Sunshield
- Roof protection grid inside cabin
- Front & rear lights
- Side mounted engine for easy access to components
- Oil immersed, multi-disc brakes on both axles
- Lockable fuel tank
- Longitudinal stability control system with load monitor
- Visible display with coloured LEDs
- Audible alarm
- Automatic lock-out of boom extension and lowering
- Lockout of stabilisers and chassis levelling with boom raised
- Automatic oscillation lockout on rear axle
- Control enable switch
- Electrical inching brake pedal activated
- Two speed transmission
- Maintenance collar

STANDARD FEATURES, cont.

POWER

- Perkins Turbo Diesel 74.4 kW (101 HP)

TYRES

- 405/70-24" PR14. 8 holes wheel disc (DIN 70361)

OPTIONS & ACCESSORIES

PRODUCTIVITY

- Air conditioning
- Second hydraulic line on boom
- Windshield protection grid
- Additional rear view mirror
- Adjustable spotlight on cab
- Adjustable spotlight on boom
- Wiper on cab roof
- Concrete mixing bucket pre-arrangement
- Pre-arrangement for hydraulic jib/winch
- Pre-arrangement for man-platform
- Rear axle alignment sensor
- 6-ton towing hitch
- Radio remote control
- 10-ton hydraulic jack 10 ton and 24 mm wheel nut wrench
- Spare wheel 405/70-24"PR14

ATTACHMENT OPTIONS

- Loading shovel 800 L
- Concrete bucket 500/800 L manual/hydraulic discharge
- Concrete mixing bucket 500 L with remote control
- Fork side-shift (+/- 100 mm)
- FEM 3 plate and forks kit
- Fixed hook on plate
- 2 m jib, 2000 kg capacity
- 4 m jib with 900 kg capacity
- 4 m jib with hydraulic winch, 900 kg capacity
- Hydraulic winch 3000 kg
- Brick-holder basket
- Fixed man platform
- Rotating and extensible man platform

Distributed By:

UK

Millennium House
Brunel Drive
Newark NG24 2DE
UK
Tel: +44 (0)1476 584333
Fax: +44 (0)1476 584334

France

10, ZA de la Croix St. Mathieu
28320 Gallardon
France
Tel: +33 (0)2 37 26 09 99
Fax: +33 (0)2 37 26 09 98

Germany

Finienweg 3
28832 Achim/Bremen
Germany
Tel: +49 (0)4202 8852-0
Fax: +49 (0)4202 8852-25

Spain

Gaià 31, Pol. Ind. Plá d'en Coll
08110 Montcada i Reixac
Barcelona
Spain
Tel: +34 93 572 50 90
Fax: +34 93 572 50 91

Scandinavia

Importgatan 17
422 46 Hisings Backa
Sweden
Tel: +46 31 57 51 00
Fax: +46 31 57 90 20

Middle East

Terex Middle East
PO Box 282325, Dubai
U.A.E.
Tel: +971 4 339 1800
Fax: +971 4 339 1802
Email: InfoME@terex.com

Genie United States

18340 NE 76th Street
P.O. Box 97030
Redmond, WA
USA 98073-9730
Tel: +1 425 881-1800
Fax: +1 425 883-3475

Email: AWP-InfoEurope@terex.com